

SINCLAIR TANK WAGON 1917

This horse drawn tank wagon was used by Sinclair Oil beginning in 1917. The tank held an amazing 300 gallons of fuel or gasoline that was delivered to farmers and homesteads for numerous uses. In comparison, today's transport trucks hold 7,000 to 12,000 gallons of fuel or gasoline.

To learn more about this horse drawn tanker and others that followed,

**Please Visit A Part of Yesterday: TODAY
At**

**Stuhr Museum of The Prairie Pioneer
4 Miles North of here at Jct. of US 281 & 34
308-385-5316**



EXIT 271- KEARNEY

EXIT 271- KEARNEY

EXIT 271- KEARNEY

EXIT 271- KEARNEY

EXIT 271- KEARNEY

EXIT 271- KEARNEY

EXIT 271- KEARNEY

EXIT 271- KEARNEY

EXIT 271- KEARNEY

EXIT 271- KEARNEY

EXIT 271- KEARNEY

EXIT 271- KEARNEY

EXIT 271- KEARNEY

EXIT 271- KEARNEY

EXIT 271- KEARNEY

EXIT 271- KEARNEY

EXIT 271- KEARNEY

EXIT 271- KEARNEY

EXIT 271- KEARNEY

EXIT 271- KEARNEY

EXIT 271- KEARNEY

EXIT 271- KEARNEY

EXIT 271- KEARNEY

EXIT 271- KEARNEY

EXIT 271- KEARNEY

EXIT 271- KEARNEY

EXIT 271- KEARNEY

EXIT 271- KEARNEY

EXIT 271- KEARNEY

EXIT 271- KEARNEY

EXIT 271- KEARNEY

EXIT 271- KEARNEY

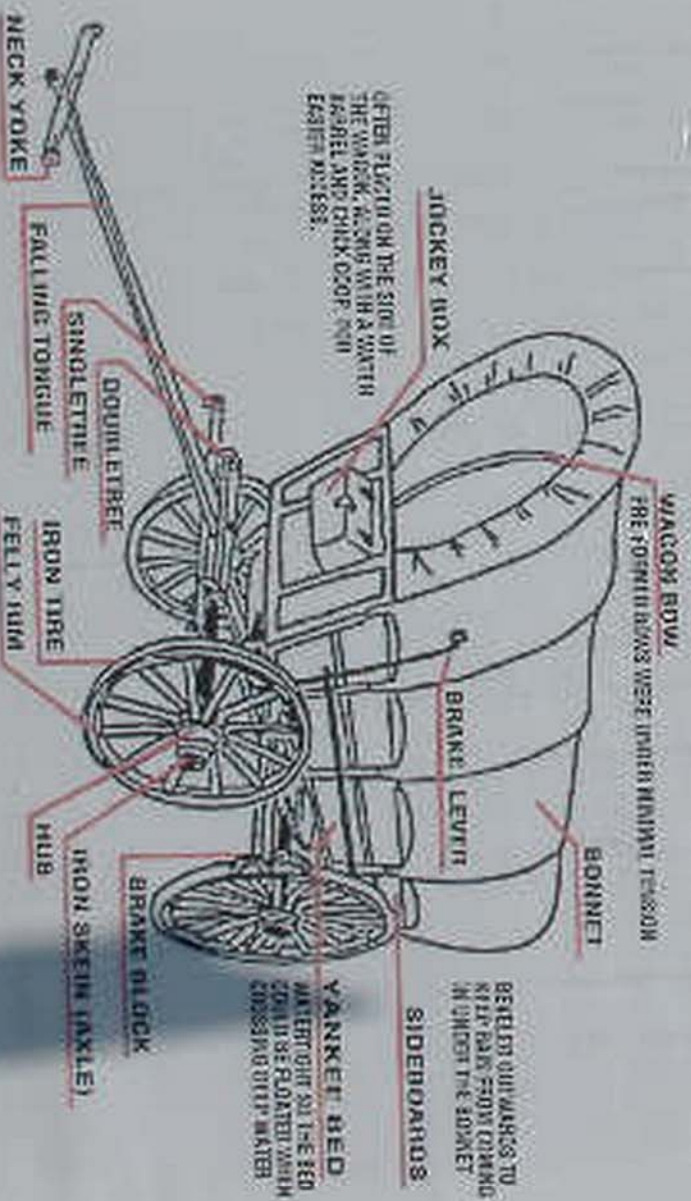
EXIT 271- KEARNEY

EXIT 271- KEARNEY



Prairie Schooners

The most common wagons used for hauling freight were the Conestogas, which were designed for their durability and size, and were very popular along the Santa Fe Trail. However, overlanders on the Oregon Trail quickly learned that Conestoga wagons were too big for their needs. The huge, heavy wagons killed even the sturdiest oxen before the journey was two-thirds complete. Their answer to the problem was dubbed the "Prairie Schooner," a half-sized version of the Conestoga that typically measured 4' wide and 10-12' in length. With its tongue and neck yoke attached, its length doubled to about 23". With the bonnet, a Prairie Schooner stood about 10' tall and its wheelbase was over 5' wide. It weighed around 1300 pounds empty and could be easily dismantled for repairs en route. Teams of 4-6 oxen or 6-10 mules were sufficient to get the sturdy little wagons to Oregon. A Prairie Schooner in good repair offered shelter almost as good as a house.







STUHR MUSEUM
OF THE
PRAIRIE PIONEER

GRAND ISLAND NEBRASKA

THIS MUSEUM IS NAMED FOR LEO B. STUHR
ORIGINATOR OF THE IDEA OF THE HALL
COUNTY MUSEUM AND FIRST PRESIDENT
OF THE HALL COUNTY MUSEUM BOARD
WHO BEQUEATHED LAND AND THE BULK
OF HIS ESTATE FOR THE CONSTRUCTION
OF THIS BUILDING.

WHILE THE MUSEUM HAS BEEN BUILT
WITH FUNDS FROM MANY SOURCES, THE
INSPIRATION AND MAJOR FINANCIAL
CONTRIBUTION HAS COME FROM ITS
FIRST BENEFACTOR AND FOR THAT REASON
THIS BUILDING BEARS HIS NAME.











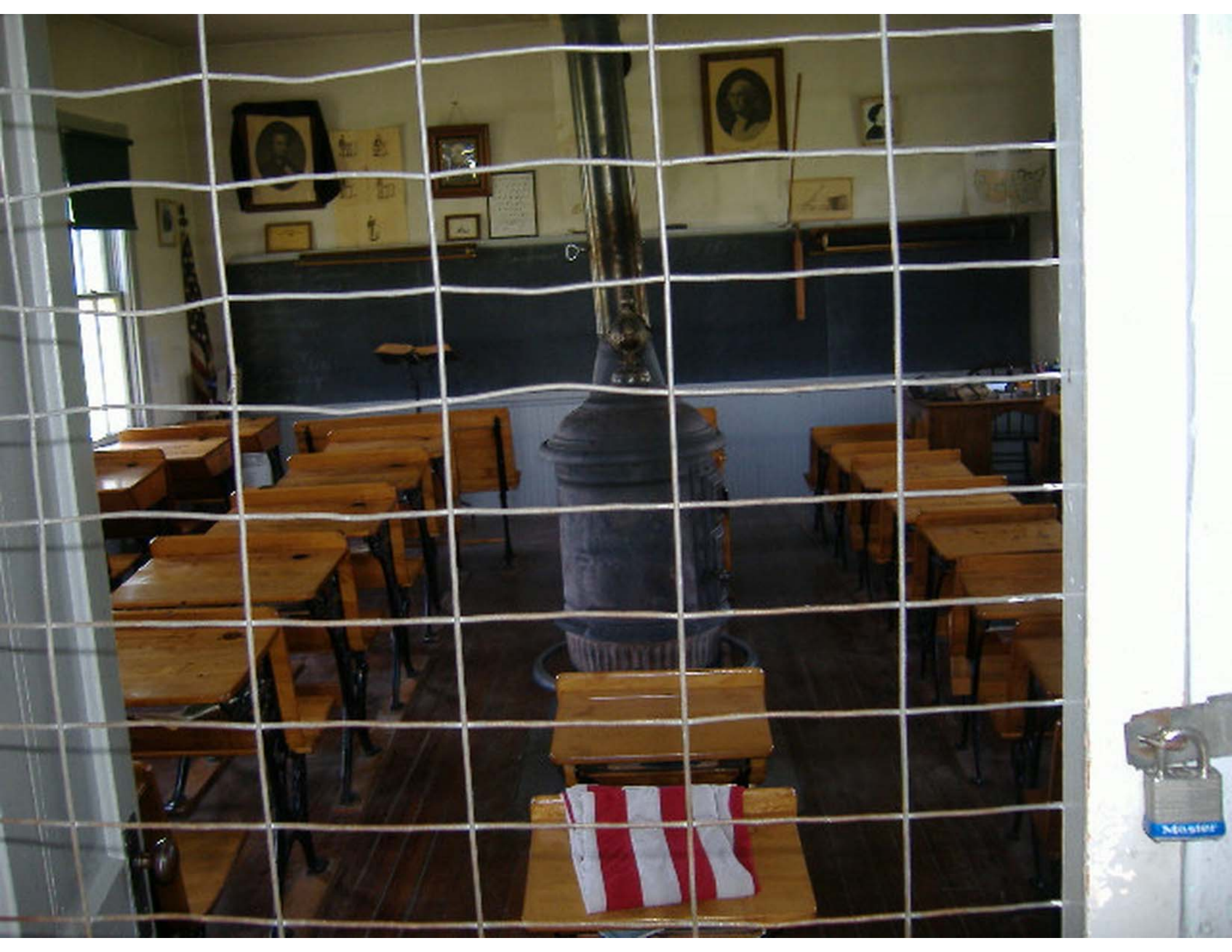




















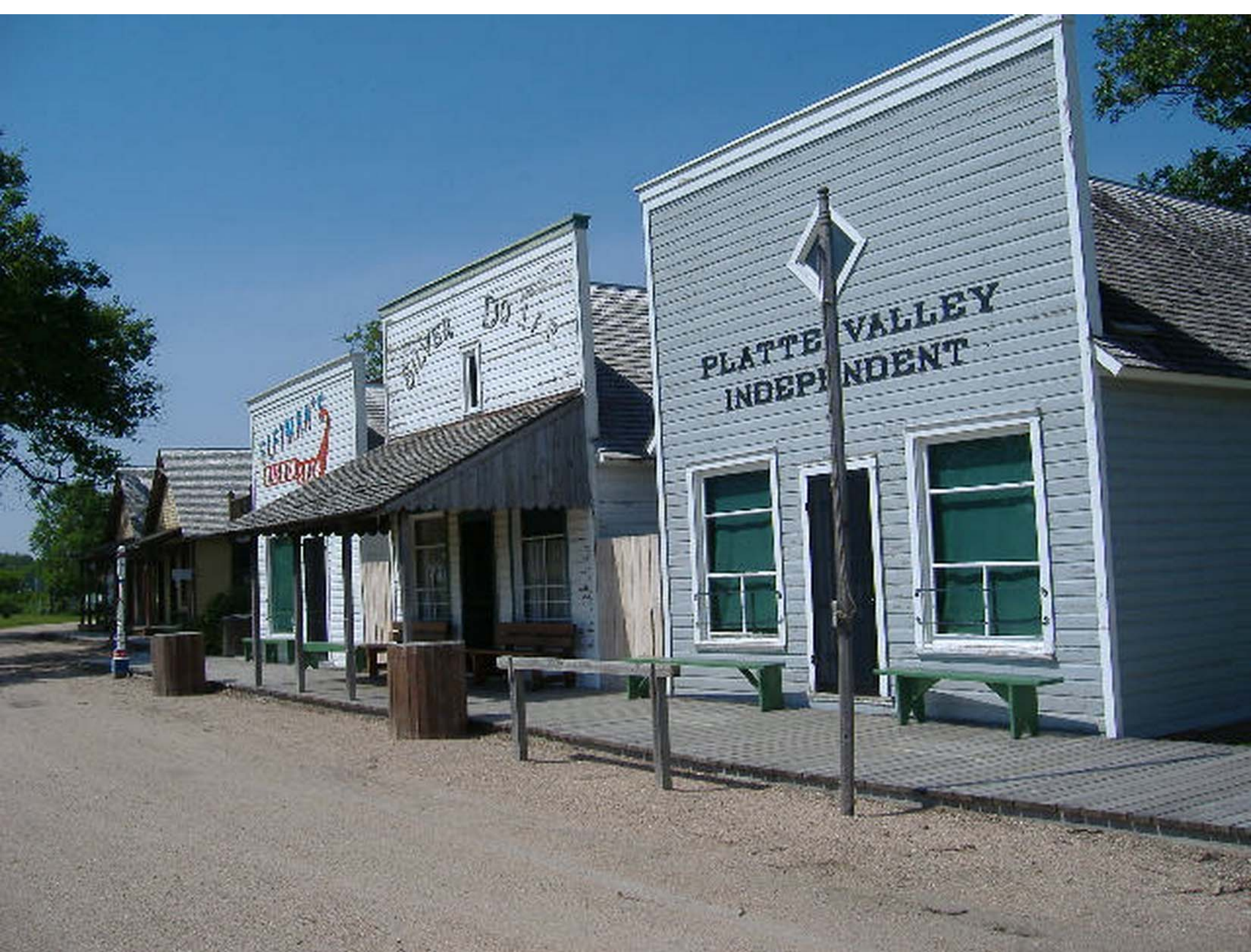
WELCOME TO RAILROAD TOWN

THE YEAR IS 1897





PLATE RIVER
ICE
COMPANY



MERCANTILE

U.S. SOUSA
SHOES
RE-MADE

SEE
SHE



TIN SHOP

WM SIEBLER
THE BLACKSMITH











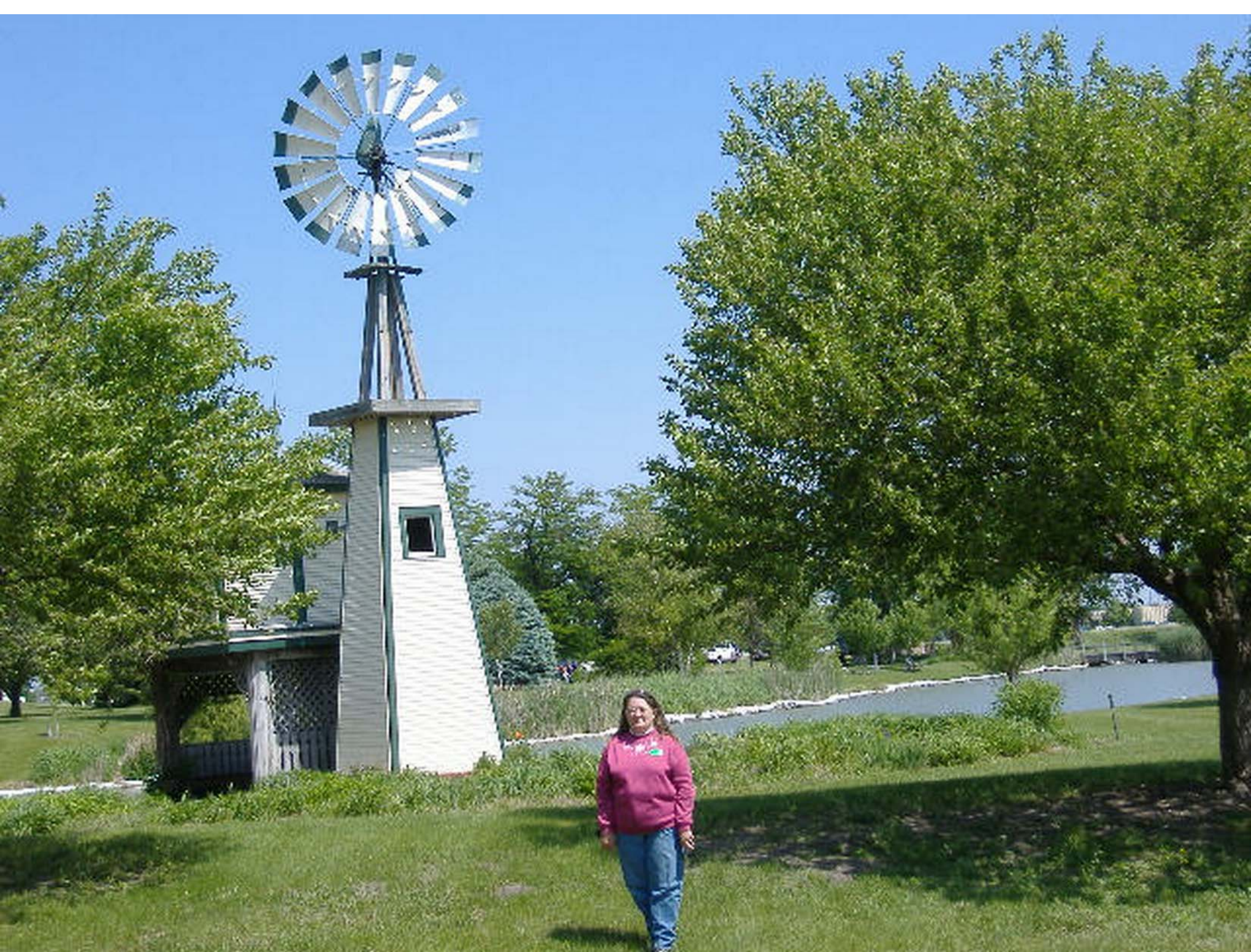




























PONY EXPRESS
OREGON TRAIL
INFORMATION



















